

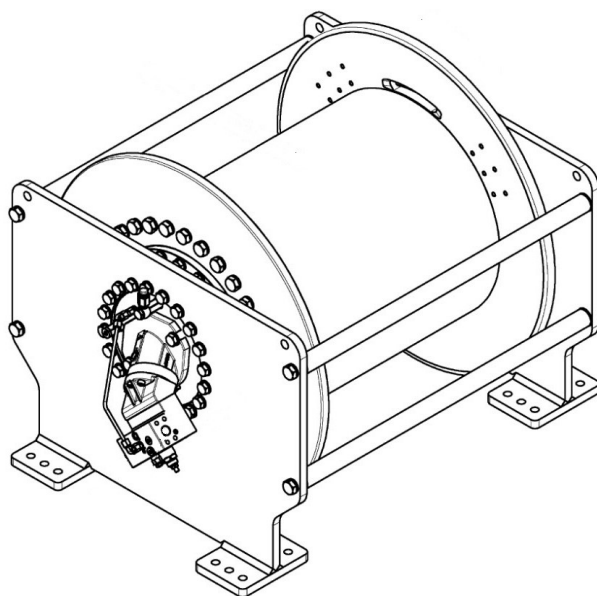
“service,
strength and
quality”

10,000 kg Hoisting & Recovery Multi-Purpose Winch

THISTLE GROUP



Multi-purpose winch with small footprint.
Line pull up to 10,000kg and 250 meter rope capacity.
Winch suitable for a variety of purposes.



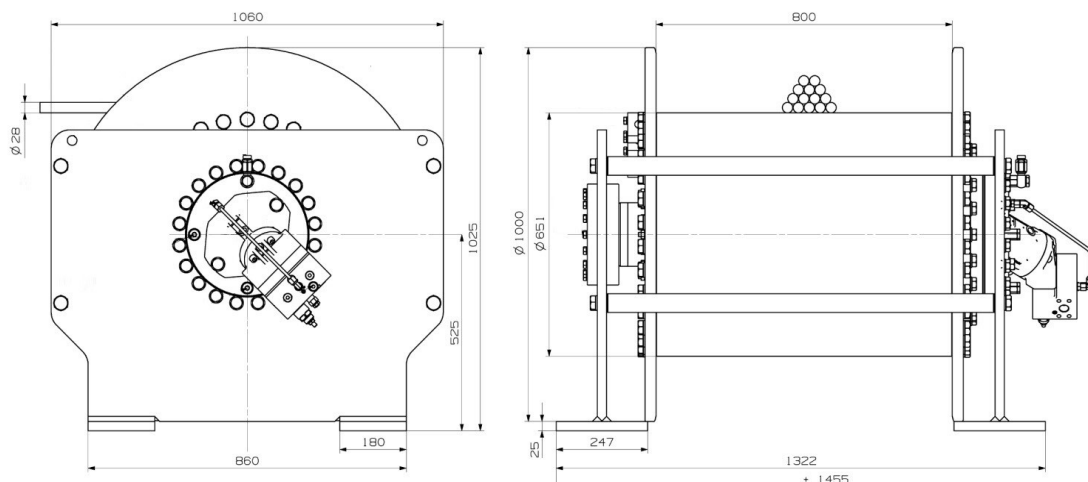
Key Points:

- Small footprint
- Suitable for subsea use
- Gearbox mounted inside drum
- **Multi-disk brake**
- Marine paint system
- Integral lifting points
- Brevini Motor

Available Accessories:

- Grooved drum
- Double drum
- Drum RPM counter
- Rope winding control
- Cable gland

Technical Data	
Line Pull Capacity (Bottom Layer):	10,000 kg
Drum Capacity:	257 m
Advised Rope Diameter	28 mm
Rope Speed (Top Layer):	12.5 m/s
Static Holding Torque:	74,000 Nm
Operating Pressure:	226 Bar
Maximum Oil Flow Rate:	73 LPM
Weight (empty):	1680 kg



THISTLE GROUP HQ
5 Baltic Place, Peterhead,
Aberdeenshire, Scotland,
AB42 1TF
Tel: +44 (0)1779 477 210
sales@thistlemarine.co.uk
www.thistlegroup.co.uk