

“service,
strength and
quality”

Thistlelift
MKB24
Fishing Crane,
Continuous
Rotation

THISTLE GROUP



The MKB24 fishing crane is one of our most popular fishing cranes, designed for harsh environment use and manufactured from seawater resistant materials throughout. Commonly used with our Power Block Head attachment for net hauling in trawling and seine fishing. It has a small footprint and flexible reach. Our service offers complete installation on your vessel and training where required. All our cranes are provided with a 1 year warranty.



Technical Data	
Load Rating:	24,000 kg / metre
Style:	Kinked main boom, 3 dynamic sections, continuous rotational base
Lift:	2,000 kg @ 8.5 metre reach
Hydraulic Supply:	Typically 210 bar at 60 LPM
Hydraulic Control:	Manual control valves
Slew Range:	Continuous rotation, dual slew motors
Overall Weight:	2,800 kg

Available with slew ring base and rotational coupler for continuous rotation as shown,



Key Points:

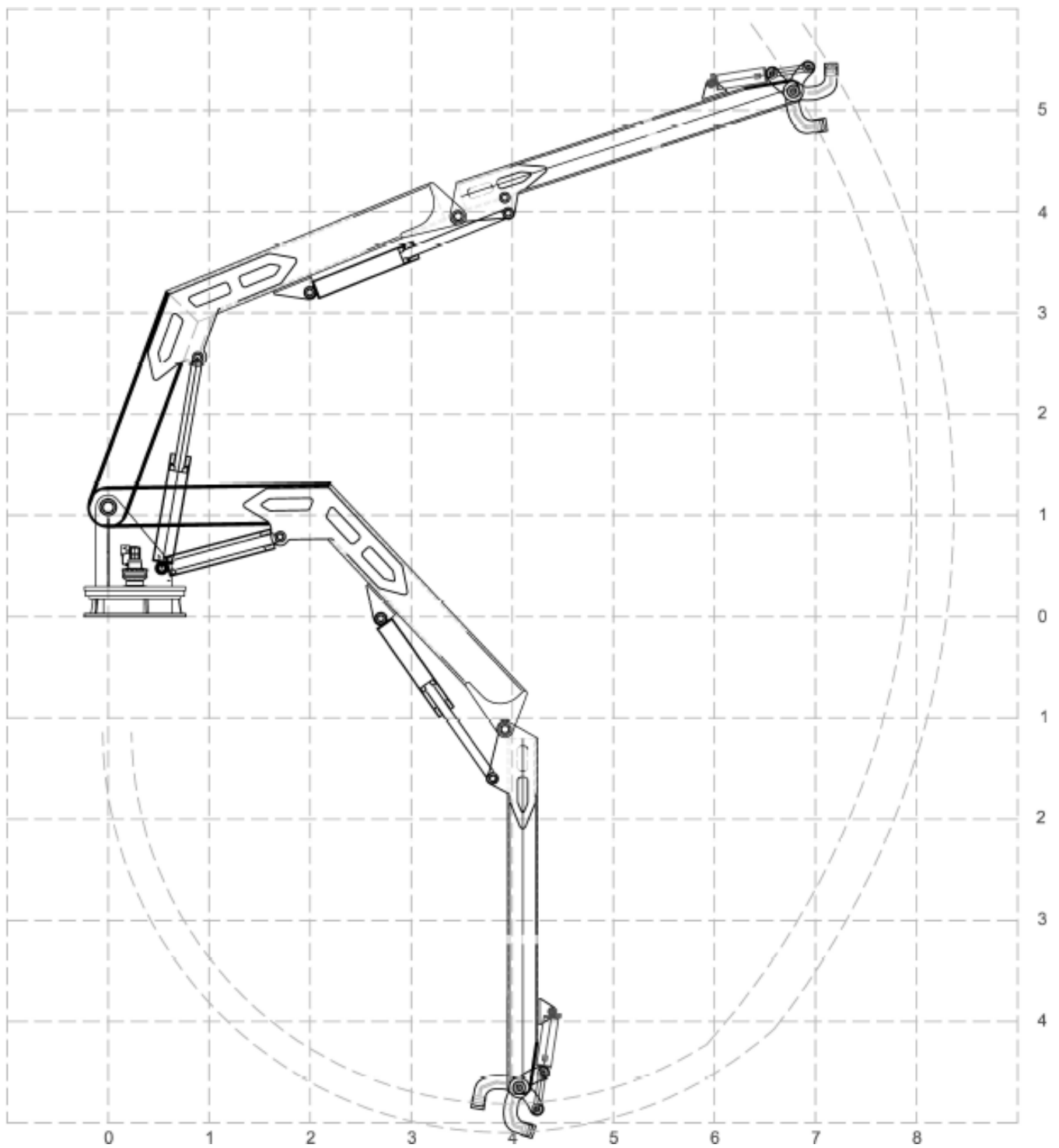
- Spare parts always in stock
- Responsive service and repair
- Available in larger capacities and reaches

Available Accessories:

- Remote control
- Power Block Head
- HPU
- Custom colours



THISTLE GROUP HQ
5 Baltic Place, Peterhead,
Aberdeenshire, Scotland,
AB42 1TF
Tel: +44 (0)1779 477 210
sales@thistlemarine.co.uk
www.thistlegroup.co.uk



Dimensional drawing available upon request

Thistlelift MKB22 Fishing Crane, Continuous Rotation



THISTLE GROUP

“service, strength and quality”

Document Number: TM-DS-022—Rev 1